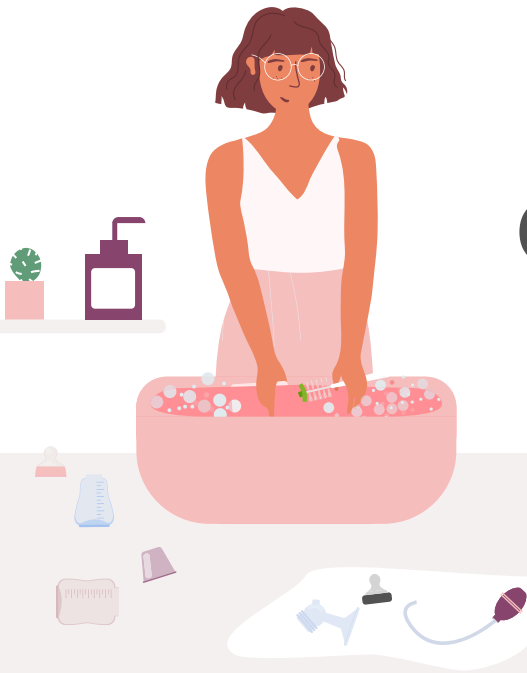
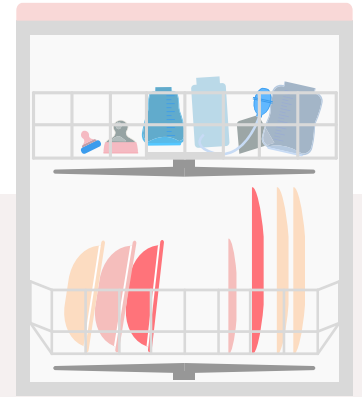




Aeroflow
Breastpumps

Breast Pump Cleaning Guide



hand washing method

STEP 1

Place pump parts in a clean wash basin used only for infant feeding items. **Do not place pump parts directly in the sink!**

STEP 2

Add soap and hot water to basin

STEP 3

Scrub items using a clean brush only for infant feeding items.

STEP 4

Rinse by holding items under running water, or by submerging in fresh water in a separate basin.

STEP 5

Air-dry thoroughly. Place the pump parts, wash basin, and bottle brush on a clean, unused dish towel or paper towel in an area protected from dirt and dust. **Do not use a dish towel to rub or pat items dry!**

Germs can grow quickly inside your pump parts from the residue left behind from your breast milk.

Because of this, it is vital that you clean your any and all pump parts that come in contact with your breast and breast milk as soon as possible.

Here are two methods you can use to clean your pumps.

dishwasher method

STEP 1

Only use this method if your pump parts are dishwasher -safe. Place small items into a closed-top basket or mesh laundry bag.

STEP 2

Add soap and run the dishwasher using hot water with a heated drying cycle (if possible) or use the sanitize setting.

STEP 3

With clean hands, remove the pump parts from the dishwasher. If the parts are not completely dry, place the pump parts on a clean, unused dish towel to air-dry before storing. **Do not use a dish towel to rub or pat items dry!**

For more information on how to keep your breast pump clean every day, safe storing, and more, visit:

aeroflowbreastpumps.com
or www.cdc.gov/healthywater/hygiene/healthychildcare/infantfeeding/breast-pump.html

AEROFLOW BREASTPUMPS

Tip #1

For extra germ removal: sanitize parts and wash basin and bottle brush after being cleaned. Items can be sanitized using steam, boiling water, or a dishwasher with a sanitize setting.

Tip #2

Having an extra set of breast pump supplies on hand is a great way to avoid any interruptions in your breastfeeding schedule.